

PLACE
SERIAL
NUMBER
LABEL
HERE

LIFT-O-FLEX EOT (Manual Rotate & Pneumatic Expander) LIFTER USER MANUAL

DOCUMENT ID: 01022018

Have Questions?

We're here for you.



+1 866 543 8635
+1 704 847 2464



info@roni.com
www.roni.com



LIFT-O-FLEX

MOBI-Crane

movomech

Voyager



RONI
8001 Tower Point Drive
Charlotte, NC 28227 USA

IMPORTANT: READ MANUAL CAREFULLY

Use the equipment strictly as intended to prevent injury or damage. Familiarize yourself with safety guidelines and operational instructions. For any questions or concerns, contact our office promptly.

BEFORE YOU BEGIN



READ

It is important that you read and understand this complete manual prior to using your LIFT-O-FLEX® ergonomic handling equipment. If you have any questions, contact your dealer or Ronl.



+1 866 543 8635
+1 704 847 2464



info@roni.com
www.roni.com



8001 Tower Point Drive
Charlotte, NC 28227 USA

SPECIAL NOTES

The appearance of your LIFT-O-FLEX® lifter and the accompanying attachments may differ from the images displayed in this manual due to the custom nature of this equipment.

LIFT-O-FLEX® is a registered trademark of Ronl, Charlotte, North Carolina.

“Where **Ergonomics** make
Economic sense.”

TABLE OF CONTENTS

1. DESCRIPTION	4
1.1 OVERVIEW	
2. SAFETY	4
2.1 STORAGE AND TRANSPORT	
2.2 MOVEMENT	
2.3 LOADING AND UNLOADING	
3. WARRANTY	5
4. EOT COMPONENTS	7
5. OPERATING INSTRUCTIONS	8
5.1 USING THE LIFTER	
6. MAINTENANCE	12
6.1 GUIDELINES	
6.2 EVERYDAY	
6.3 MONTHLY	
6.4 YEARLY	
7. SPARE PARTS	14
8. DECLARATION OF CONFORMITY	16



1. DESCRIPTION

1.1 OVERVIEW

The Expand-O-Turn (used in conjunction with the LIFT-O-FLEX Lifter) is provided to assist in handling loads that require gripping and rotation. The unit provided will also help to prevent injuries as well as create safer working conditions for people that already suffer from injuries related to the moving of heavy objects. The lifter with Expand-O-Turn has been designed to be used in warehouses, industrial plants, institutional kitchens, drug stores, post offices, etc.

The Expand-O-Turn can be provided as either a complete unit on a new lifter or retrofitted to an existing lifter should your requirements change after your original lifter has been in service.

2. SAFETY

2.1 STORAGE AND TRANSPORT

When transporting and storing the Expand-O-Turn attached to a lifter, the power cable between the lifters power pack and the motor control box must be unplugged.

2.2 MOVEMENT

The lifter is only intended for in-door use and on flat solid surface.

2.3 LOADING AND UNLOADING

The user is responsible for ensuring that the lifter is loaded correctly. The maximum load must not be exceeded (max weight is as noted on the label regardless of weight capacity of lifter model).



The lifter and the end effector are not to be used for lifting people.

The operator is to be aware of the risk of injury that exists when raising or lowering the end effector. Avoid putting your arm through the handlebar when trying to get a hold of or pick up something from the end effector. The operator must always be aware of not holding his hands or other parts of his body under a hanging load.

Always lower the end effector to the lowest possible level above the floor before any transport of material or goods is attempted. The load is to be centered and be as close to the lift mast as possible in order to provide maximum stability. Be especially careful when passing over thresholds, cables and other obstacles on the floor. When working, always make sure you keep the end effector on the same level as the object you intend to lift.

3. WARRANTY

Limited Warranty

Ronl warrants this product to be free of defects in material and workmanship during the warranty period. Our warranty obligation is to provide a replacement for a defective original part if the part is covered by the warranty, after we receive a proper request from the warrantee (you) for warranty service.

Who may request service?

Only a warrantee may request service. You are the warrantee if you purchased the product from Ronl or from an authorized distributor and Ronl has been fully paid.

What is an “original part”?

An original part is a part used to make the product as shipped to the warrantee.

What is a “proper request”?

A request for warranty service is proper if Ronl receives: 1) a photocopy of the customer invoice that displays the shipping date and, 2) a written request for warranty service that includes your name and phone number. Requests may be sent using the following methods:



Mail

Ronl
8001 Tower Point Drive
Charlotte, NC 28227

Fax

Toll Free 1-866-543-9532
Direct 1-704-847-6739

Email

info@roni.com

What is covered under the warranty?

After Ronl receives your request for warranty service, an authorized representative will contact you to determine whether your claim is covered by the warranty. Before providing warranty service, Ronl may require you to send the entire product, or just the defective part(s), to its facility in Charlotte, North Carolina.

How long is the warranty period?

The warranty period for original dynamic components is one (1) year. For batteries, the warranty period is 30 days. The warranty period begins on the date when Ronl ships the product to the warrantee.

Warranty Evaluation

All parts sent back (freight paid by customer) to Ronl for warranty replacement and/or repair will be evaluated. Ronl will determine if the part is a warranty issue or if it has been damaged due to misuse or negligence. A written report will be issued detailing the investigation of the part and whether or not the part is classified as warranty.

What is not covered by this warranty?

1. Labor
2. Freight
3. Occurrence of any of the following, which will automatically void the warranty:
 - product misuse
 - negligent operation or repair
 - corrosion or use in corrosive environments
 - inadequate or improper maintenance
 - damage sustained during shipping
 - collisions or other incidental contacts causing damage to the product
 - unauthorized modifications: do not modify the product in any way without first receiving written authorization from Ronl as modifications(s) might make the product unsafe to use or could potentially cause excessive and/or abnormal wear

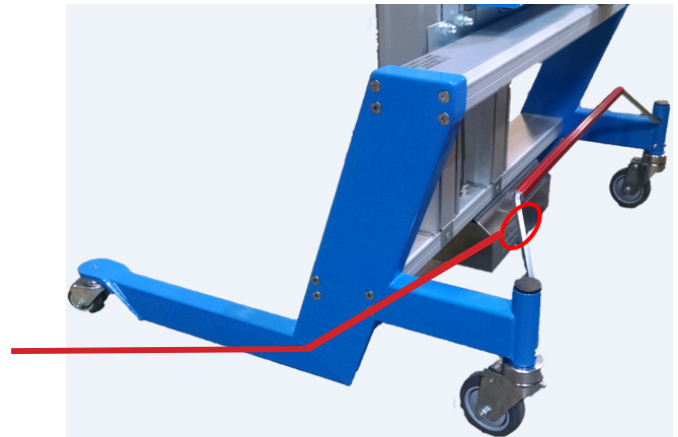


If a defective part is warranted, how will Ronl correct the problem?

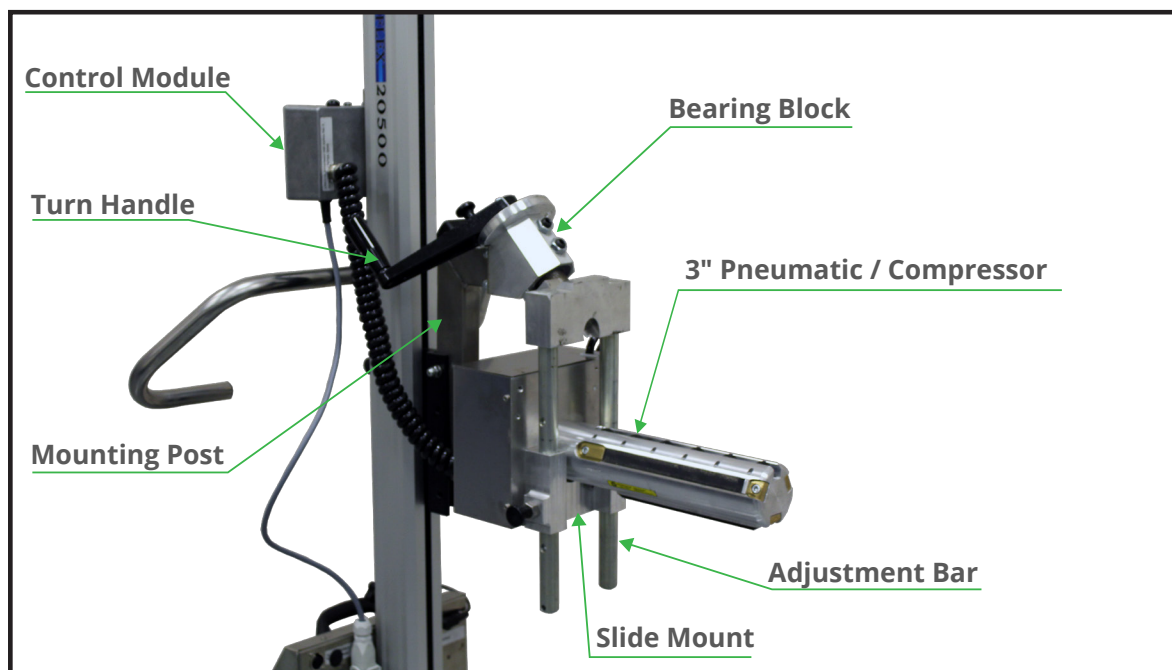
Ronl will provide an appropriate replacement for any covered part. An authorized representative of Ronl will contact you to discuss your claim.

Warranty Procedure

In the event that a part is damaged or broken, please contact Ronl via phone or email to establish a dialogue to identify and diagnose the problem. Please have your lifter serial number available when you call or email. (Located on the motor cover underneath the intermediate)



4. EOT COMPONENTS



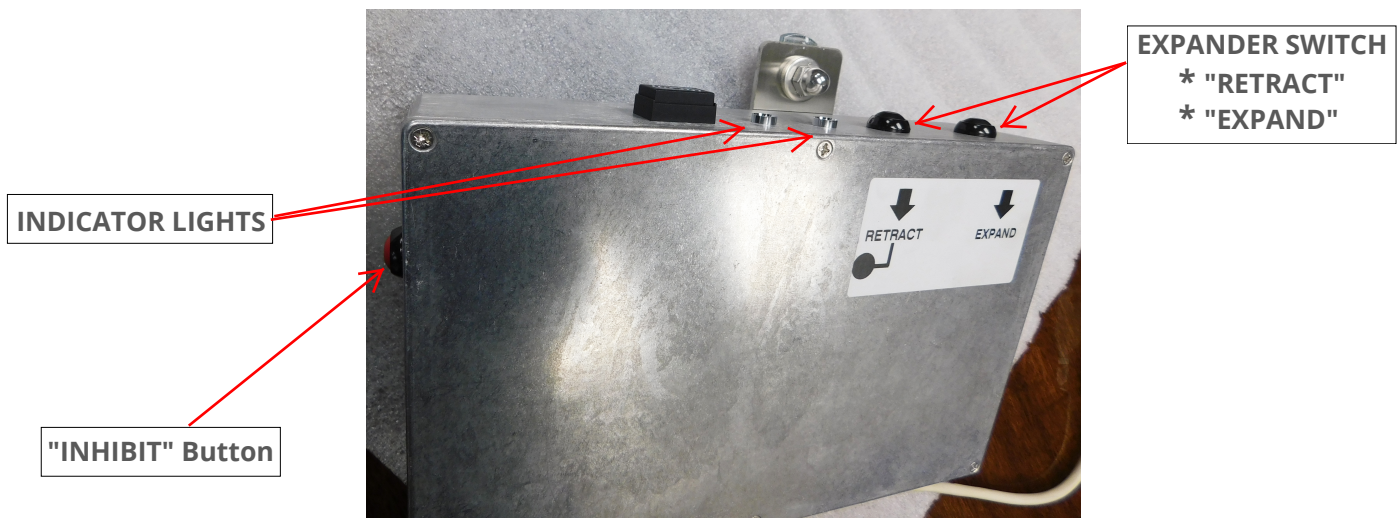
Disposal after useful life

When the lifter has provided many years of use and is ready to be disposed of, it should be recycled. The LIFT-O-FLEX® lifter is manufactured with materials that are recyclable. We have also selected recyclable gel-cell batteries over nickel-cadmium batteries for this purpose.

5. OPERATING INSTRUCTIONS

5.1 USING THE LIFTER

CONTROL MODULE



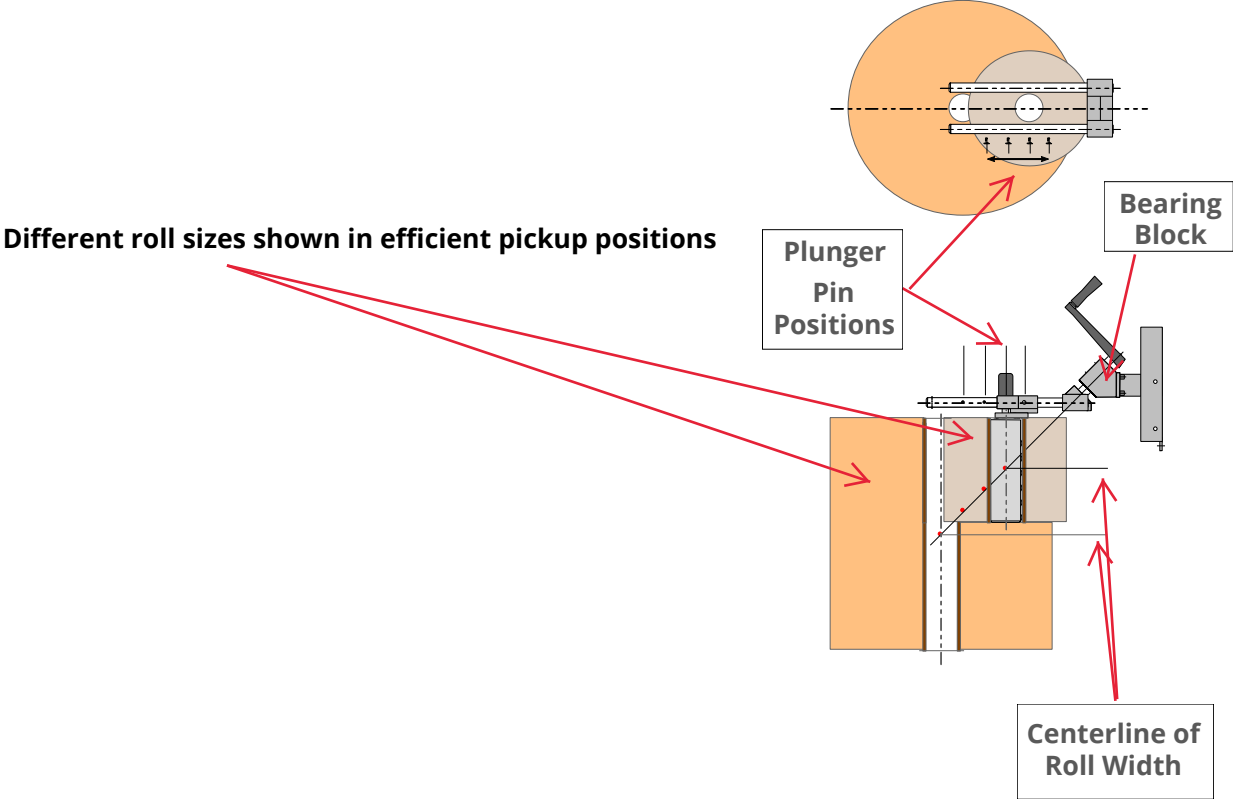
If the Expand-O-Turn is in a preset (fixed) position, adjustment of the expander position is not required.

If the unit is supplied with a spring-loaded detent, the operator must determine the roll size being handled and adjust the expander mechanism on the slides to the proper position prior to roll pickup.

Generally, (4) positions are provided on the slide bar for this purpose. The best position for roll rotation is noted in the diagram on the following page. The centerline of the roll width is to be aligned with the 45 angle of the bearing block. A variation of ~ 1" either side of center is acceptable and will allow for the least effort required when rotating the roll.

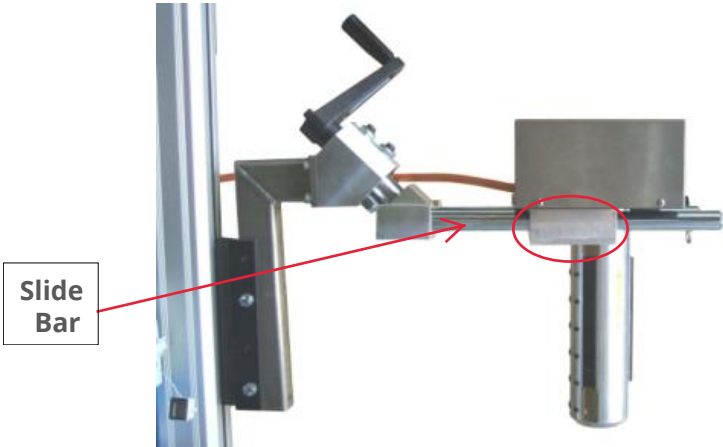
(continued on the next page)

If adjustment is required, simply pull the plunger out and move the expander to the proper position and release the plunger. The plunger will engage the detent in the side of the shaft, locking it into position. If the plunger does not lock, simply move the expander back and forth on the shaft until it slips into place. Do not hold the plunger pin out during this operation.



The following chart reference can also be found on your expander slide bar

Move pin according to roll width for ease of rotation.		
Position 1		
Position 4		
Position	Max Diameter	Max Width
1	24"	11"
2	28"	16"
3	32"	19"
4	36"	21"



The Expand-O-Turn expander is operated via pushbuttons and is simple and easy to use and will not damage the core or the roll surface. The core expander with “INHIBIT” button avoids accidental opening of the expander. If needed, a quick disconnect module is used providing ease of change over between different core expanders. The Expand-O-Turn will eliminate the difficult and unsafe conditions common to manual roll handling operations. An “INDICATOR LIGHT” is provided to ensure that the expand mechanism is either “RETRACTED” or “EXPANDED”. The light does not remain on during expanding or retracting. As the operator causes the expander to retract or expand, the light will be momentarily activated indicating the operation requested is completed.

The PNEUMATIC EXPAND-O-TURN is available in several versions and is used for paper and film rolls with a variety of core sizes. Roll cores used with the PNEUMATIC EXPAND-O-TURN must be consistent in size in order to ensure proper functionality. Rolls of varying dimensions and weights can be handled.

Rolls to be loaded on spindles are generally received on pallets or placed on the floor for pickup by the lifter. If rolls are to be picked up from a pallet, spacer blocks are required to allow for lifter leg clearance under the pallet. (Check lifter leg height for clearance required).

When preparing to pick up a roll, make sure that the expander mechanism is retracted. With the core expander vertical to the floor, approach the roll to be loaded and center the expander over the core. Next, lower the expander into the core by lowering the Expand-O-Turn with the remote control. After the expander has been lowered into the core as far as it will go, lock the lifter into position with the foot activated brake bar. Next, press the “EXPAND” button on the remote control and hold it down until the indicator GREEN light turns on and then off; the expander will automatically stop after reaching a preset current draw. This will ensure that the expander is fully expanded.



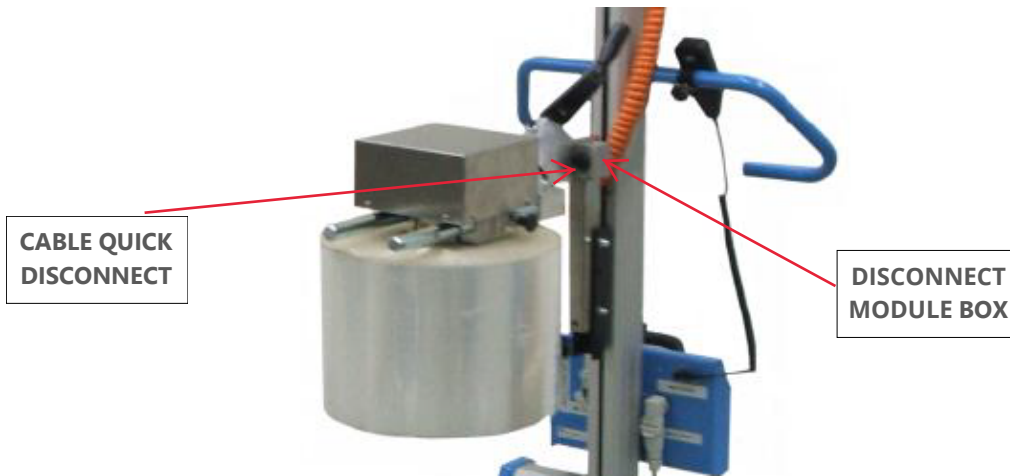
After expanding the Expand-O-Turn, unlock the foot brake and raise the roll by pressing the “UP” button on the remote controller. After achieving clearance, move the lifter away from the pick-up point, raise or lower the Expand-O-Turn to a comfortable travel height and rotate the roll from core vertical to core horizontal using the rotate handle.

After roll rotation, move the lifter to the off load position, raise the roll to the proper elevation, align the roll core with the spindle and set the foot brake. Next, press the “RETRACT” and “INHIBIT” button on the control module until the indicator RED light turns on and then off. NOTE: “RETRACT” button will not activate unless the “INHIBIT” button has been activated at the same time. After closing the expander, slide the roll onto the spindle. Pushing the roll off the expand mechanism is easy due to the skate wheels mounted on the top of the core expander. Next, move the lifter away from the drop off position and rotate the core expander from horizontal to vertical by using the rotate handle until the expander is in position. After off loading the roll, move the lifter back to its wait position to await its next operation.

****Always rotate the roll to a horizontal position and retract as soon as possible after lifting. Leaving the core expanded for more than a few minutes will result in a fault warning.****



PNEUMATIC EXPAND-O-TURN QUICK DISCONNECT MODULE



The Cable Quick Disconnect provides power to the expander and rotate motor and can be provided with quick exchange features for change out of the expander (different sizes) without changing the complete end-effector for another. When in need of changing expanders, simply twist the cable counterclockwise from the Disconnect Module Box, remove the expander, install the new expander and reconnect the cable to the Disconnect Module Box.

6. MAINTENANCE

6.1 GUIDELINES

In order for the lifter to function properly, it is important that maintenance is carried out in accordance with what is described below. The stated service intervals are applicable during normal use and charging once a day. Further use requires more frequent service intervals. After disassembly or assembly of the column or load carrier, a load test should be performed.

6.2 EVERYDAY

Clean the lifter by wiping it down only. Wipe the lifter dry after cleaning. Do not use hose or high-pressure jet as this may damage the electronics and the paint.

6.3 MONTHLY

Check that no abnormal noises have arisen in the motor and gear.

6.4 YEARLY

Electrical connections: Check all connections and repair any damaged or worn components. If necessary, replace with new parts.

Screws and nuts: Check that all screws and nuts are still tight.

Plates and decals

Verify that the following plates and decals are attached and fully readable.

Plate / Decal	Description	Placement
Slider bar pin adjustment	Chart reflecting pin adjustment for roll	On the EOT slider bar



7. SPARE PARTS

Only spare parts supplied or approved by Roni may be used.

Commonly Ordered Spare Parts

Part Number	
17970A-03-02	Rubber / Gripper Bars (1 piece only)
17970A-03-01	Pneumatic Bladder (1 piece only)
10-1356A	Crank Handle Only
8497A38	Spring Plunger
73913	Square Inhibit Button
17145	Buttons for Rotate (right and left) (1 piece only)
17970-10	Interface Board for Pneumatic Expander
17970-21	24V DC Compressor
17970-36	Spiral Cable

**Contact us to
order!**

**1-866-LIFT-O-FLEX
(543-8635)
spareparts@roni.com**



17970A-03-02 Rubber_Gripper Bars



17970A-03-01 Pneumatic Bladder_v2



10-1356A Crank Handle



8497A38 Spring Plunger

(continued on the next page)



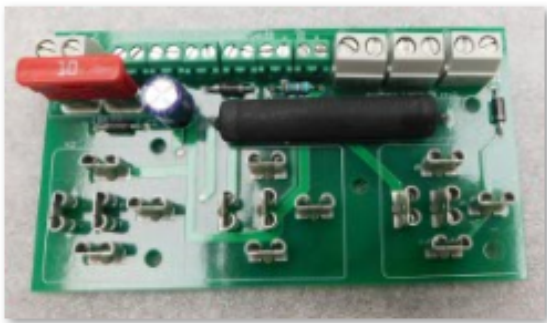
Commonly Ordered Spare Parts



73913 Square Inhibit Button



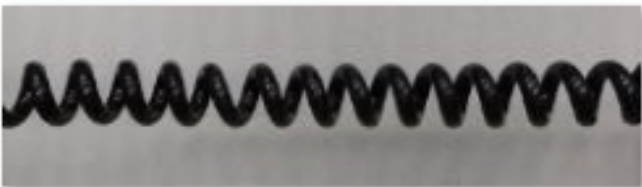
17145 Rotate right or Rotate left button



17970-10 Interface Board for Pneumatic Expander



17970-21 24V DC Compressor



17970-36 Spiral Cable



8. DECLARATION OF CONFORMITY

Manufacturer	Pronomic AB Box 5504 192 05 Sollentuna Sweden
Model	LIFT-O-FLEX - EXPAND-O-TURN
Serial Number	
Static load test	

Authorized to compile the technical file	Samuel Pierre, Pronomic AB, BOX 5504, 192 05 Sollentuna, Sweden
--	---

Applied EC directives:

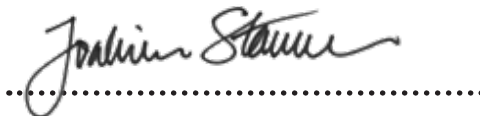
2006/42/EC	Machinery Directive
2004/108/EC	EMC Directive

Applied standards:

SS-EN ISO 12100:2010	Safety of machinery - General principles for design - Risk assessment and risk reduction (ISO 12100:2010)
SS-EN 349+A1:2008	Safety of machinery - Minimum gaps to avoid crushing of parts of the human body

We hereby declare that the above-referenced machine, built and equipped with attachments included in this manual, is in conformity with the applicable conditions state in the directives and standards.

Sollentuna, 2015-12-07



Joakim Stannow, Pronomic AB

The lifter has been modified and/or equipped with attachments as follows:

.....

.....

After modification a supplementary risk analysis has been performed and the machine is certified to be in conformity with the directives and standards above.

.....

Place, date



NOTES









LIFT-O-FLEX

MOBI-Crane



Voyager

RONI

8001 Tower Point Drive
Charlotte, NC 28227
USA

+1 866 543 8635

info@roni.com

www.roni.com

R on I reserves the right to change this information without further notice and holds no liability for printing errors in this content.

Copyright © 2016 R on I, All Rights Reserved.